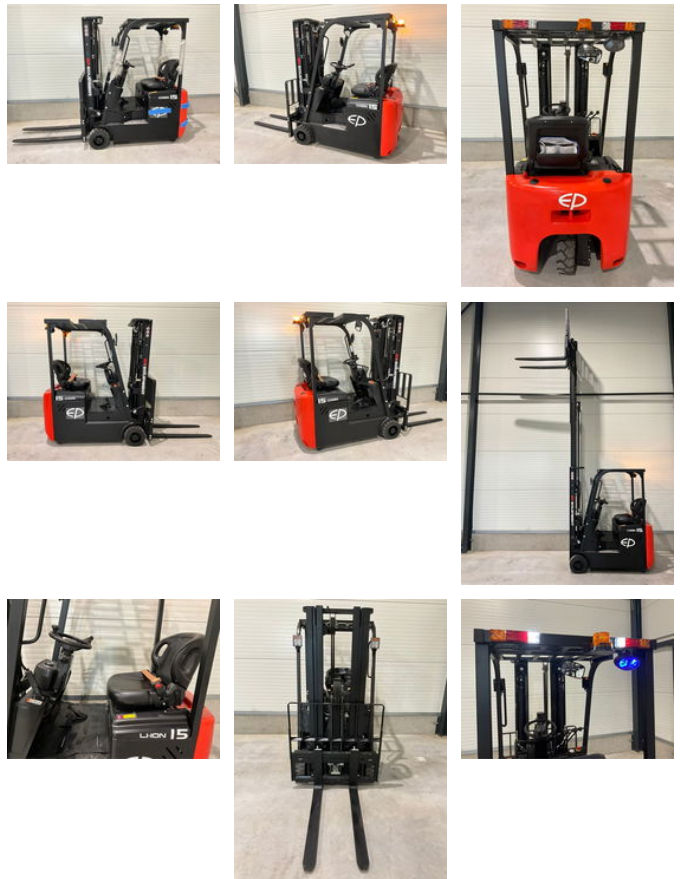




Ep EFS 151 EFS 151 hefhoogte 4,50 meter

General features

Brand	Ep
Subcategory	Forklift
Construction year	2024
General condition	Very good
Reference	143
CE marking	Yes



Characteristics

Empty weight	2.360kg
Length	180cm
Width	100cm
Cabin	Open
Lifting capacity	1.500kg

Lifting height	4.500mm
Mast type	Triplex
Clearance height	1.990mm

Ep EFS 151 EFS 151 hefhoogte 4,50 meter

Description

This is EP's most compact model, the 3-wheel forklift with 1500 kg lifting capacity. Very compact, maneuverable and the standard 4.5 meter plywood mast with free lift make this a very complete forklift for a very competitive price. Has a maintenance-free Li-ion battery; Very suitable for use in narrow aisles; Very compact Improved mast with optimal visibility

Accessories