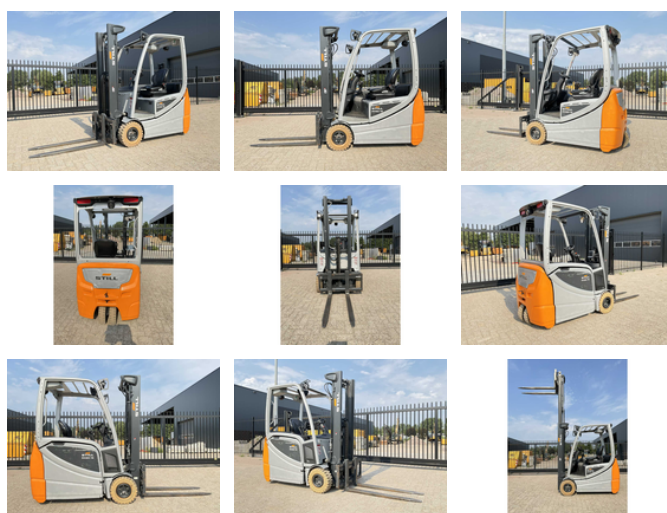




## Still RX20-16

### General features

Brand	Still
Subcategory	Forklift
Construction year	2018
Hourmeter reading	14065
Condition	Used
General condition	Very good



### Characteristics

Length	332cm
Width	109cm

Cabin	Half open
Lifting capacity	1.600kg
Lifting height	3.230mm
Mast type	mastType.duplex
Clearance height	207mm

# Still RX20-16

## Description

Additional options : LED lighting in front , blue spot in the rear , recently inspected

## Accessories