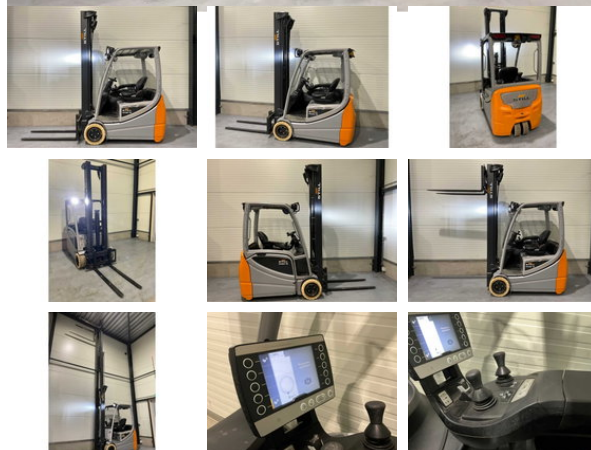




Still RX20-16

General characteristics

Brand	Still
Subcategory	Forklift
Year of construction	2018
Condition	Used
General state	Very good



Properties

Single weight	3.382kg
Length	3.210cm
Width	1.170cm
Cabin	Open
Max. lifting capacity	1.600kg
Lifting height	6.820mm
Mast type	Triplex
Clearance height	2.880mm

Description

Additional options: All-round LED lighting, blue spot, joystick, rotating beacon