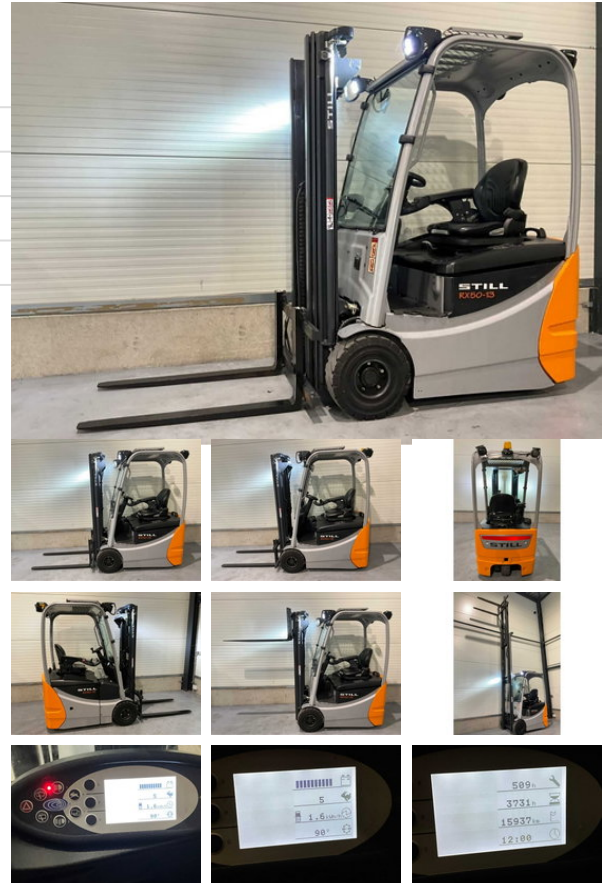




Still RX50-13

General characteristics

Brand	Still
Subcategory	Forklift
Year of construction	2020
Hours displayed	3730
Condition	Used
General state	Very good



Properties

Single weight	2.807kg
Length	2.800cm
Width	1.010cm
Cabin	Open
Max. lifting capacity	1.500kg
Lifting height	465mm
Mast type	Triplex
Clearance height	2.120mm

Description

Additional options: All-round LED lighting, Blue spot rear, Rotating beacon, Joystick control, Very neat compact truck