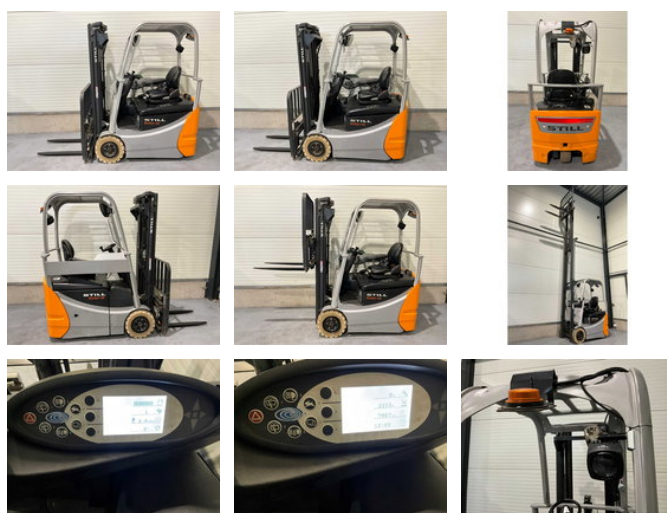




## Still RX50-13

### General features

Brand	Still
Subcategory	Forklift
Construction year	2019
Hourmeter reading	2215
Condition	Used
General condition	Very good



### Characteristics

Empty weight	2.723kg
Length	2.640cm

Width	1.010cm
Cabin	Open
Lifting capacity	1.500kg
Lifting height	465mm
Mast type	Triplex
Clearance height	2.120mm

# Still RX50-13

## Description

Additional options: Blue spot rear, rotating beacon, non-marking tyres, joystick control, very neat compact truck

## Accessories